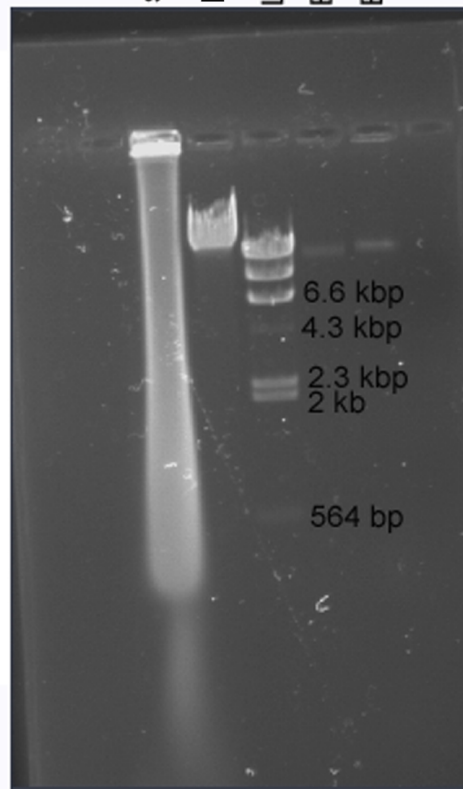


0.8% agarose gel in 1X TAE buffer

salmon sperm DNA
Lambda DNA - uncut
Lambda DNA+HinDIII Standards
E. coli genomic DNA
E. coli genomic DNA



bp = base pairs
kbp = kilobase pairs

Gel by:
Rennie Schlater, Hannah Minor, Siu Wei Huang
and Jessica Davis
Benicia HS Biotech, Benicia, CA, 2005