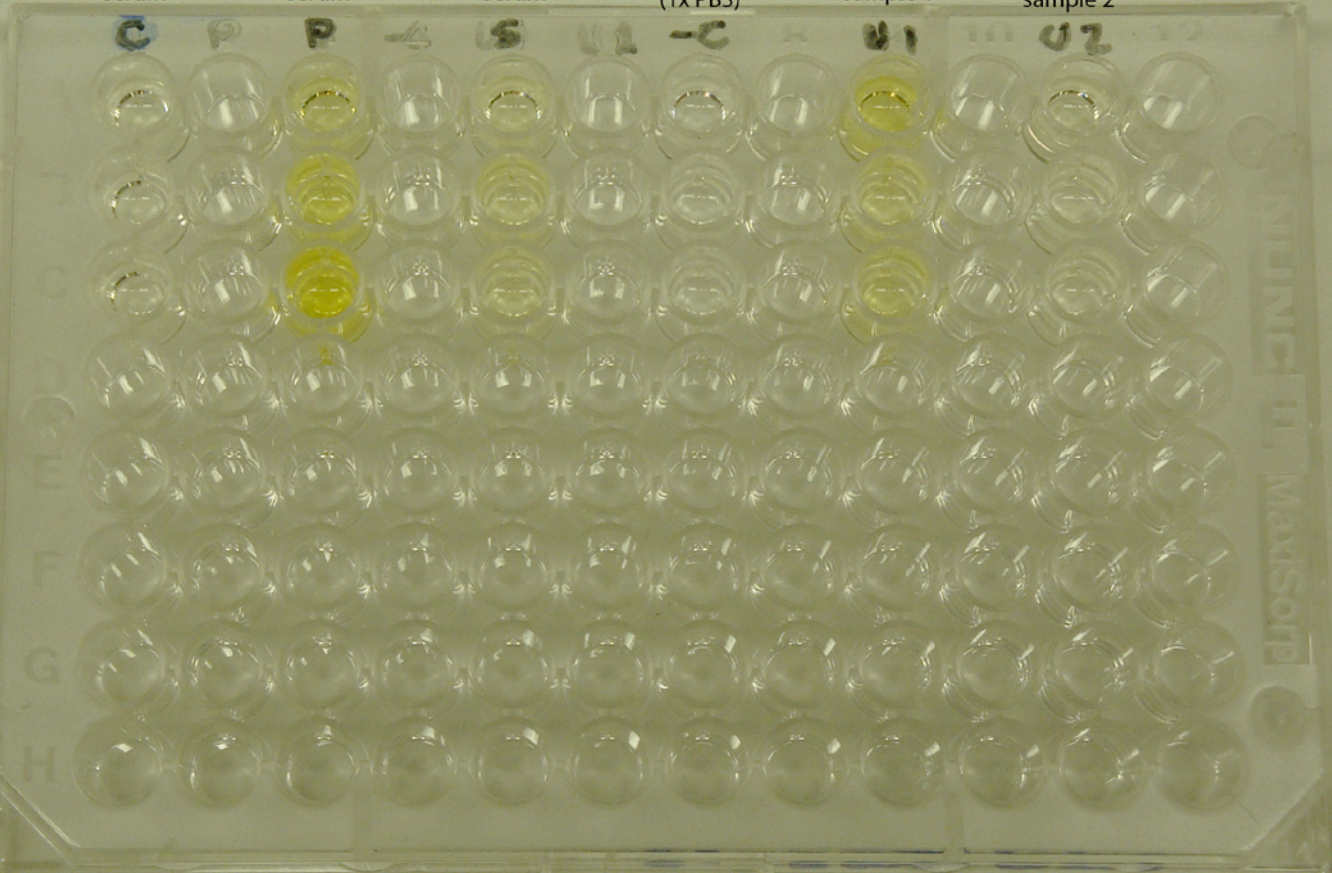


Pig IgG ELISA
Looking for pork contamination in beef products (Unknowns 1 and 2).

beef (cow) serum	pork(pig) serum	sheep (lamb) serum	negative control (1x PBS)	unknown beef sample 1	unknown beef sample 2
---------------------	--------------------	-----------------------	---------------------------------	-----------------------------	-----------------------------



Data Analysis:

No recognition of cow IgG by anti-pig IgG. Thus this is a good ELISA to distinguish between cow and pig IgG molecules.

Strong recognition of pig IgG by anti-pig IgG.

Some recognition of sheep IgG by anti-pig IgG. Similarity in sheep and pig IgG molecules. Thus this is not a good ELISA to distinguish between these molecules.

Unknown 1 appears to have pig IgG in it (contaminated).

Unknown 2 appears to be uncontaminated