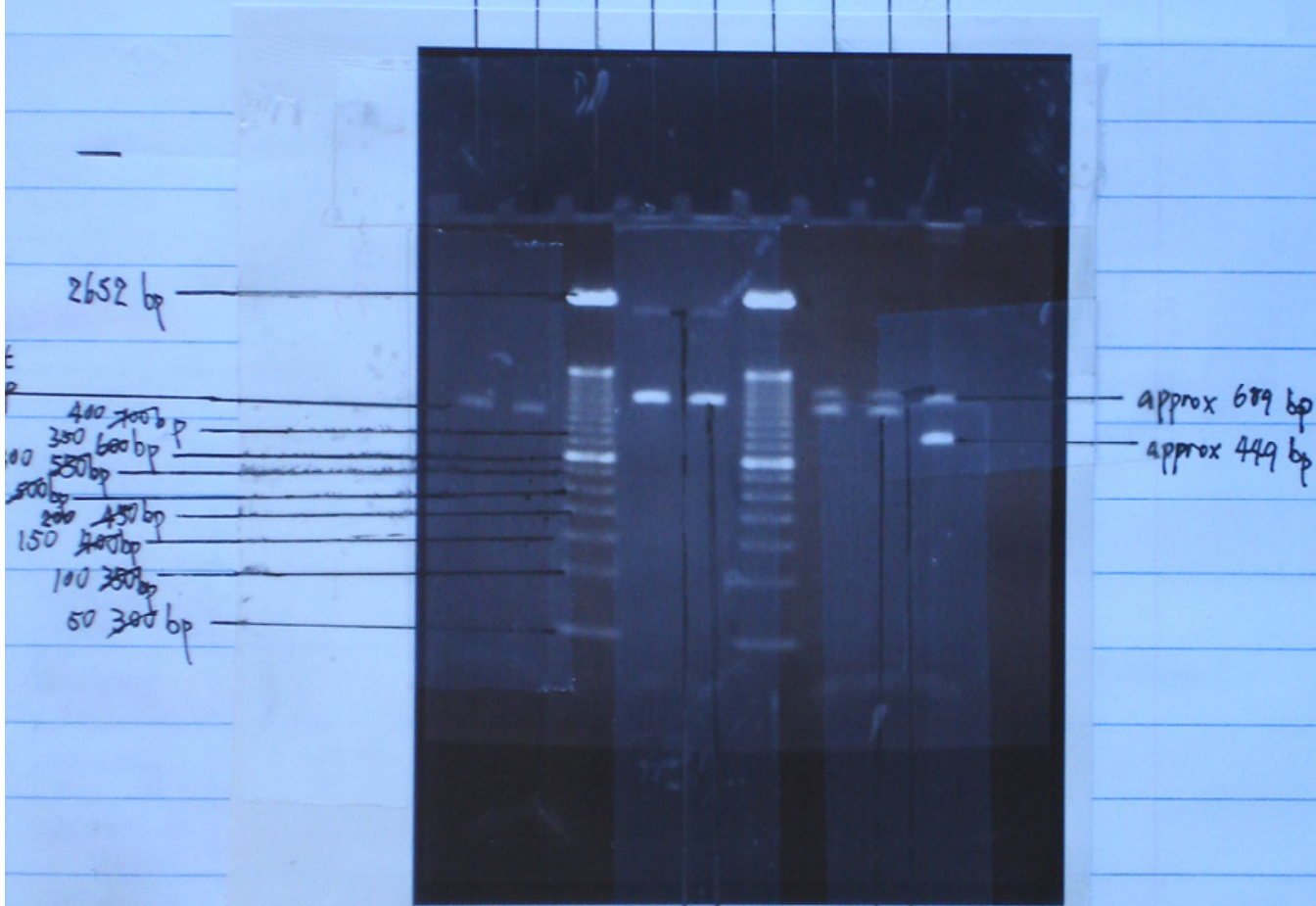


DIS80 PCR Product (BA)
 DIS 80 PCR Product (BA)
 Standard
 DIS80 PCR Product (JY)
 DIS80 PCR Product (JY)
 Standard
 DIS80 PCR Product (MO)
 DIS80 PCR Product (MO)
 Positive Standard control



2652 bp
 400 bp
 350 bp
 300 bp
 250 bp
 200 bp
 150 bp
 100 bp
 50 bp

approx 689 bp
 approx 449 bp

Approx 705 bp
 PCR Product
 PCR Product approx 609 bp
 DIS80 PCR Product, approx. 641 bp

Not sure if it is actually a band, most likely just a secondary product, approx 2000 bp

n pig
 7/2007

go to p43