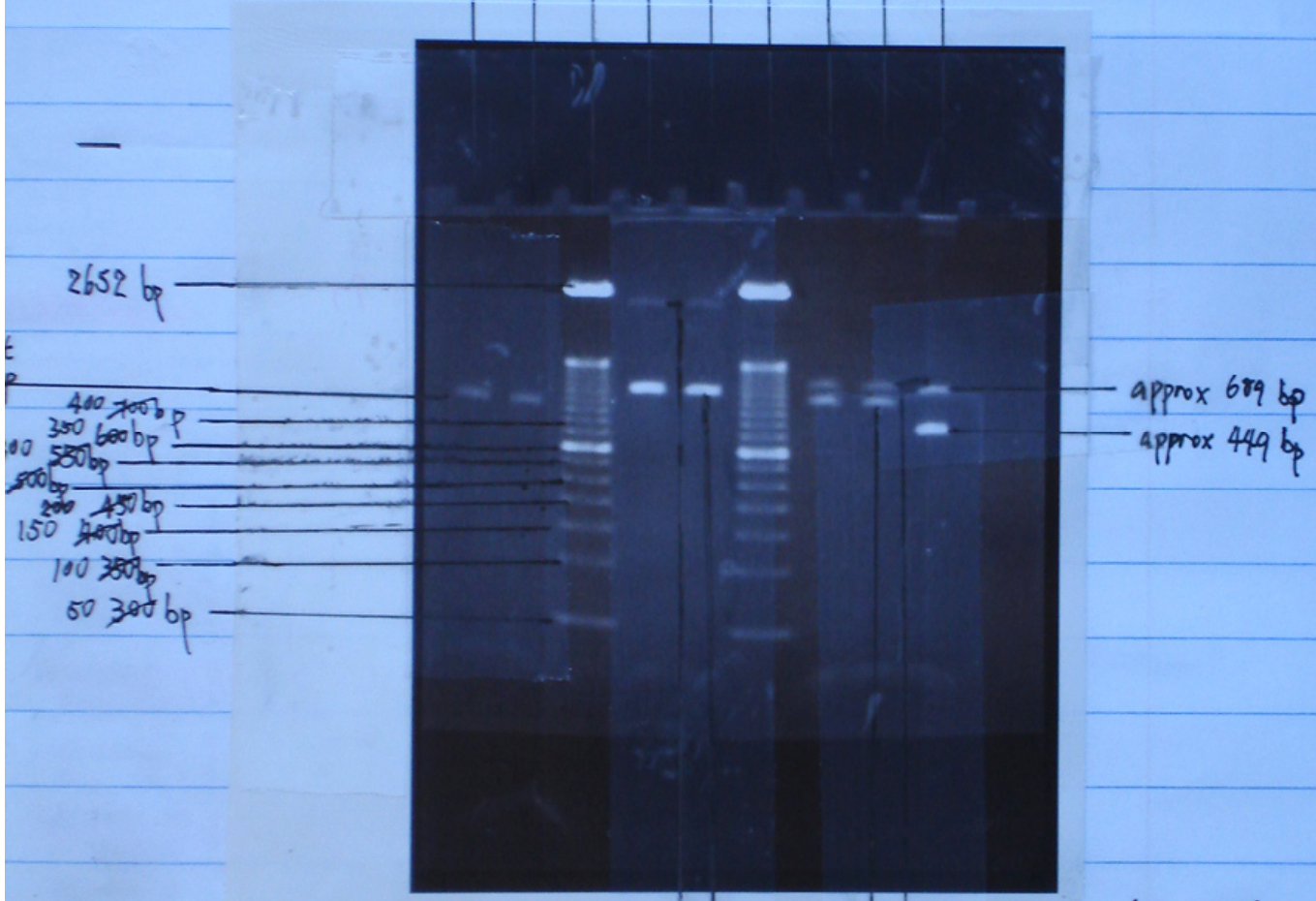


DIS80 PCR Product (BA)  
 DIS 80 PCR Product (BA)  
 Standard  
 DIS80 PCR Product (JY)  
 DIS80 PCR Product (JY)  
 Standard  
 DIS80 PCR Product (MO)  
 DIS80 PCR Product (MO)  
 Positive Standard Control



2652 bp  
 400 bp  
 300 bp  
 200 bp  
 150 bp  
 100 bp  
 50 bp

approx 689 bp  
 approx 449 bp

Approx 705 bp  
 PCR Product  
 PCR Product  
 approx 609 bp

Not sure  
 if it's  
 actually  
 a band,  
 most likely  
 just a secondary  
 product, approx 2000 bp

1/2009

go to p43